

# Creating New Dashboard Packages for SAP Business One 8.8



## Applies to:

SAP Business One versions 8.8 PL12 or higher  
SAP Business One Integration Component (B1iC)  
SAP Business One Dashboard Packaging Wizard (B1DW)  
SAP Crystal Dashboard Design 2008 Fix Pack 3.1 or higher

## Summary

The following article guides you through end-to-end how to create new dashboard packages for SAP Business One 8.8 with a simple [sample](#) – Top 10 Business Partners.

**Author:** Yatsea Li

**Company:** SAP

**Created on:** 29 September 2010

## Author Bio



Based in Shanghai, China. Joined SAP on April 2005, working for SAP Business One Add-On team. Since August 2008, joined the SAP Business One Solution Architects team. The Solution Architect team assists partners with the technical challenge they face while developing and implementing their solution

## Table of Contents

Introduction .....	3
1. Introduction to SAP Crystal Dashboard Design .....	3
2. SAP Business One and the Integration Component .....	4
3. SAP Business One Dashboard Packaging Wizard .....	4
4. SAP Crystal Dashboard Design .....	5
4.1 How to Obtain SAP Crystal Dashboard Design .....	5
4.2 SAP Business One Data and SAP Crystal Dashboard Design .....	5
5. Software Prerequisites .....	6
5.1 Run-Time Phase .....	6
5.2 Design-Time Phase.....	6
5.3 Licensing.....	7
Creating Dashboard Packages for SAP Business One 8.8 .....	7
Procedure.....	8
Step 1 – Generate the User Query(s) in SAP Business One .....	8
Step 2 - Design SAP Crystal Dashboard Design dashboard .....	10
Step 3 – Export the SAP Crystal Dashboard Design dashboard into a flash .....	20
Step 4 – Package the Dashboard(s) with SAP Business One Dashboard Packaging Wizard (B1DW).....	21
Step 5 –Deploy the Dashboard Package in the target SAP Business One system .....	25
Related Content .....	29
Copyright .....	30

## Introduction

### 1. Introduction to SAP Crystal Dashboard Design



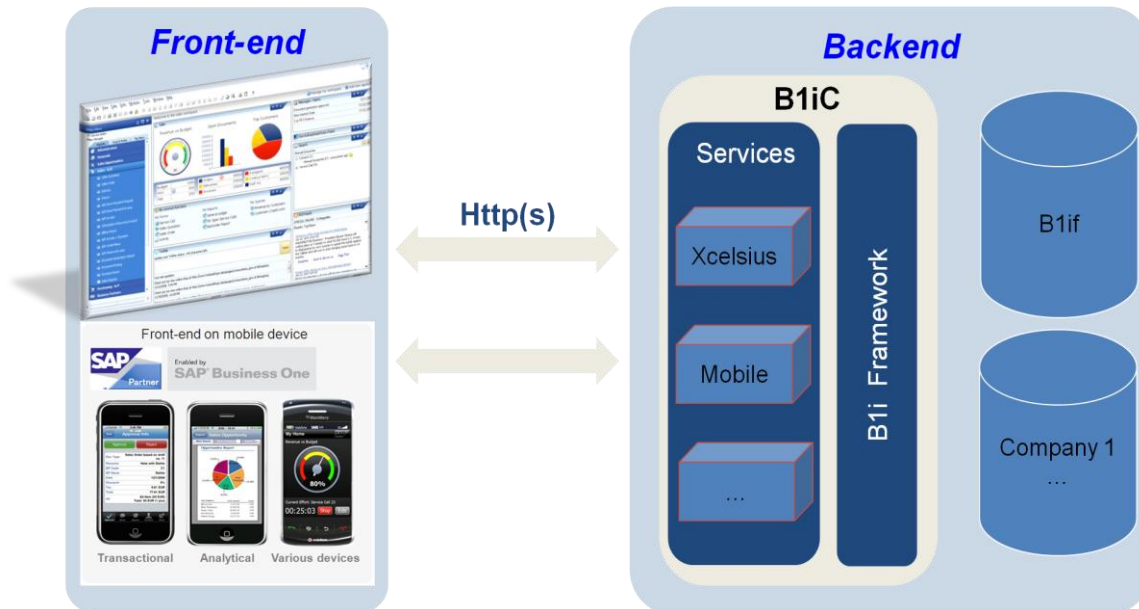
Just like a pilot gets lots of information in one glance of the airplane's dashboard, managers can get lots of information in one glance of a well-designed dashboard.

SAP Crystal Dashboard Design is a data dashboard design tool that displays summary-level business data in a visually rich and intuitive format that allows users to analyze and interact with their data in order to make better business decisions.

SAP Crystal Dashboard Design has the ability to show data using gauges, charts, and other components, to generate interactive flash files, and to generate "what if" scenarios – all of which are tremendous tools for decision-making.

## 2. SAP Business One and the Integration Component

Since SAP Business One PL12, the integration component for SAP Business One 8.8 comprises a number of business scenarios that enable you to integrate the SAP Business One application with third-party software and mobile devices. The predefined SAP Crystal Dashboard Design package in B1iC integrates SAP Crystal Dashboard Design and SAP Business One, accessing to the SAP Business One Company Databases with via HTTP(S) request and displaying dashboards with Adobe Flash Player in SAP Business One Application. Three predefined Dashboard Packages about Financial, Sales and Services are available by default from SAP, SAP also enables partners or Business Partners to develop their own Dashboard Packages and deploy them in SAP Business One. The following diagram shows the components of Dashboards in run-time.



- **SAP Business One Integration Component (B1iC)**

There are three predefined service packages available in the integration component: SAP Crystal Dashboard Design, Mobile and Datev HR. The predefined SAP Crystal Dashboard Design service package in B1iC provides the connection to SAP Business One Company Database in run-time.

- **SAP Business One Application**

In order to use the dashboard feature, you should have SAP Business One 8.8 PL12 or higher version installed. Also you need to enable the Cockpit/Dashboard features from General Setting of SAP Business One. Adobe Flash Player 9.0 or higher version is required to view the dashboards.

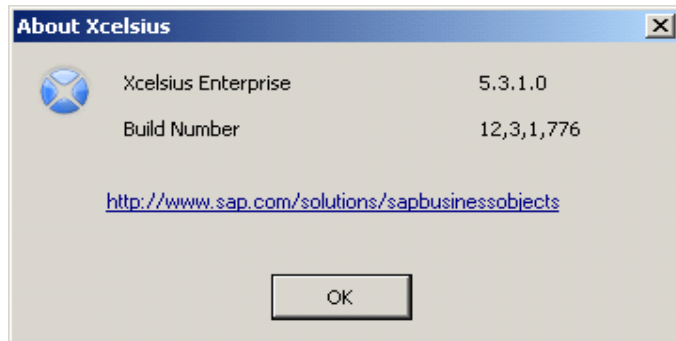
## 3. SAP Business One Dashboard Packaging Wizard

This tool may be necessary when you want to create new dashboard packages. It can help to automate the dashboard packaging after designing the dashboards with SAP Crystal Dashboard Design. It is a free-of-charge SAP Business One Add-On developed by SAP Business One Solution Architect team.

You can download the tool here: <http://www.sdn.sap.com/irj/sdn/businessone?rid=/library/uuid/601ca48d-67a8-2d10-ebb1-8d1b968059b2>

## 4. SAP Crystal Dashboard Design

In order to create your own dashboards, you need to have SAP Crystal Dashboard Design 2008 Fix Pack 3.1 or higher installed. (Formerly as Xcelsius)



### 4.1 How to Obtain SAP Crystal Dashboard Design

- You need to buy SAP Crystal Dashboard Design separately.  
For information on buying SAP Crystal Dashboard Design, contact your local SAP representative.
- In this demo, we use the SAP Crystal Dashboard Design Department Edition license.

For more information about SAP Crystal Dashboard Design, please refer to the Business Object tools landing page:

[https://websmp106.sap-ag.de/~form/sapnet?\\_SCENARIO=01100035870000000183&\\_SHORTKEY=01100035870000711038&\\_OBJECT=011000358700000566202008E&\\_ADDINC=011000358700001192682007E&](https://websmp106.sap-ag.de/~form/sapnet?_SCENARIO=01100035870000000183&_SHORTKEY=01100035870000711038&_OBJECT=011000358700000566202008E&_ADDINC=011000358700001192682007E&)

### 4.2 SAP Business One Data and SAP Crystal Dashboard Design

SAP Crystal Dashboard Design can work with data from different sources. In the following sample, we will show how to display live data from SAP Business One in an SAP Crystal Dashboard Design dashboard with XML Data Connection.

## 5. Software Prerequisites


### 5.1 Run-Time Phase

Software List	More Information
SAP Business One 8.8 PL 12 or higher	Enable Cockpit and Dashboard properly. Refer to <u>Working with Dashboard</u> Documentation about the default dashboards.
Integration Component	Refer to the <u>Administrator Guide of integration component</u> for more information
Adobe Flash Player 9.0 or higher	You can download it from: <a href="http://www.adobe.com">www.adobe.com</a>

### 5.2 Design-Time Phase

For the partners, to create new dashboards, you must ensure that the following software has been installed with the appropriate configuration and settings.

Apart from the software required in run-time, you need the following additional software to create new dashboard for design-time.

Software List	More Information
SAP Crystal Dashboard Design 2008 Fix Pack 3.1 or higher	<p>SAP Crystal Dashboard Design 2008, Departmental edition or personal edition, including Data Manager.</p> <p><u>Departmental Edition:</u> Unlimited data connections to the underlying data source <a href="http://www.sap.com/solutions/sap-crystal-solutions/dashboards-visualization/sapcrystaldashboard-starter/index.epx">http://www.sap.com/solutions/sap-crystal-solutions/dashboards-visualization/sapcrystaldashboard-starter/index.epx</a></p> <p><u>Personal Edition:</u> (formerly Xcelsius Engage software) <a href="http://www.sap.com/solutions/sap-crystal-solutions/dashboards-visualization/sapcrystaldashboard-personal/index.epx">http://www.sap.com/solutions/sap-crystal-solutions/dashboards-visualization/sapcrystaldashboard-personal/index.epx</a></p> <p> <b>Recommendation</b></p> <p>You are recommended to install the departmental edition.</p>
Microsoft Excel 2003 or 2007	It is used by SAP Crystal Dashboard Design.
SAP Business One Dashboard Packaging Wizard	Optional but strongly recommended. You can download it for free from here: <a href="http://www.sdn.sap.com/irj/sdn/businessone?rid=/library/uuid/601ca48d-67a8-2d10-ebb1-8d1b968059b2">http://www.sdn.sap.com/irj/sdn/businessone?rid=/library/uuid/601ca48d-67a8-2d10-ebb1-8d1b968059b2</a>

### 5.3 Licensing

#### SAP Business One standard dashboards

Users of SAP Business One are fully licensed to view the SAP developed standard dashboards. These licenses are included in all user licenses for SAP Business One.

However users can not use these licensed to develop or view customized dashboards.

#### Developing customized dashboards:

For developing dashboards you will need to purchase a valid license for SAP Crystal Dashboard Design which includes “live data connections to external data sources”.

For more information see: <http://www.sap.com/solutions/sap-crystal-solutions/dashboards-visualization/productcomparison/index.epx>

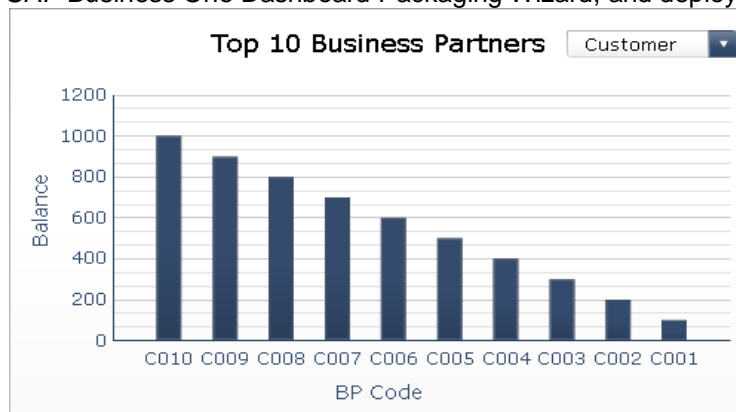
#### Using customized dashboards

Dashboards which are not developed and provided by SAP are not covered under the standard licenses. Additional named-user licenses have to be obtained with the “viewing option” to use the customized dashboards.

For more information see: <http://www.sap.com/solutions/sap-crystal-solutions/dashboards-visualization/productcomparison/index.epx>

## Creating Dashboard Packages for SAP Business One 8.8

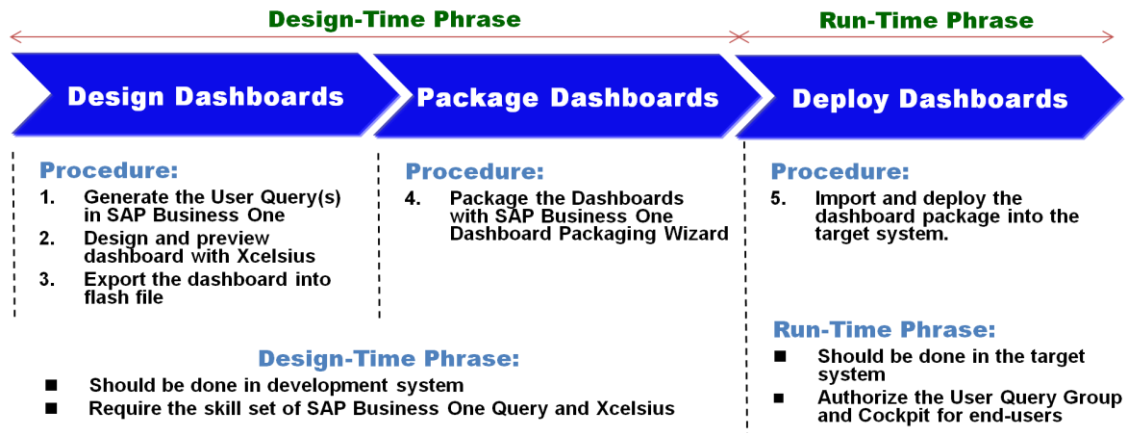
In the following demo, we'll generate an SAP Crystal Dashboard Design dashboard showing the Top 10 Business Partners in SAP Business One, using the XML Data for querying the data from the company database. The dashboard will be dynamically loaded with the selected business partner type – Customer or Vendor, also enabling the drilldown to open the selected Business Partner Master Data in SAP Business One. After the dashboard generation with SAP Crystal Dashboard Design, we'll package the dashboard with SAP Business One Dashboard Packaging Wizard, and deploy it in the target SAP Business One system.





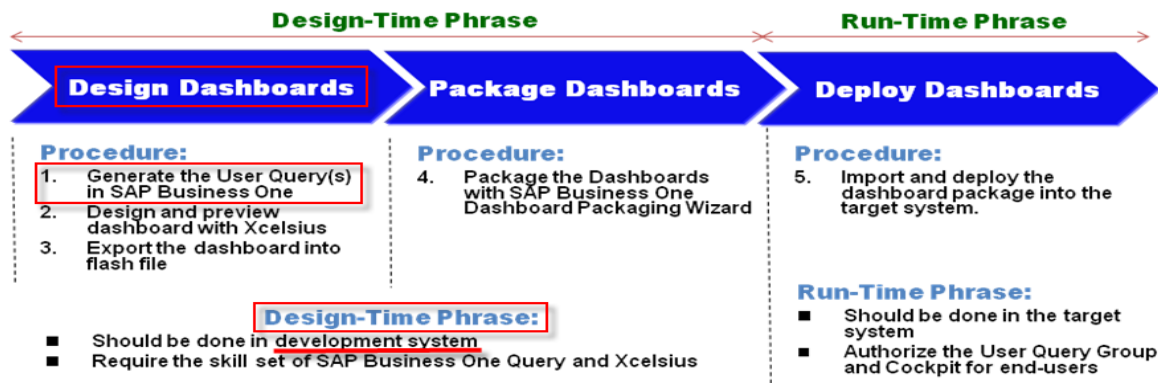
## Procedure

1. Generate the User Query(s) in SAP Business One
2. Design dashboard(s) with SAP Crystal Dashboard Design
3. Export the dashboard to flash file
4. Package the Dashboard(s) with SAP Business One Dashboard Packaging Wizard
5. Deploy the Dashboard Package in the target SAP Business One system



To create the sample dashboard, do the following steps.

### Step 1 – Generate the User Query(s) in SAP Business One



Generate the following User Query about Top 10 Business Partners with CardType as parameter order by balance.

<b>Query Category</b>	Dashboards_Demo
<b>Query Name</b>	Top_10_BPs
<b>Query</b>	SELECT TOP 10 T0.[CardCode], T0.[Balance] FROM OCRD T0 WHERE T0.[CardType] = '[%0]' ORDER BY T0.[Balance] DESC
<b>Authorization Group</b>	Note: Set up Authorization Group of Query and Authorizations for end user accordingly.



**Note**

Query should be generated manually in the development system in the design phase, and will be generated automatically in the implementation system while importing the dashboard into the target system.

Query:

**Top\_10\_BPs**

```
SELECT TOP 10 T0.[CardCode], T0.[Balance] FROM OCRD T0 WHERE T0.[CardType] = ' [%0]' ORDER BY T0.[Balance] DESC
```

#	BP Code	Account Balance
1	C60000	88,949.99
2	C42000	64,925.00
3	C20000	1,272.00
4	Dev	600.00
5	C99999	0.00
6	C99998	0.00
7	C70000	0.00
8	C50000	0.00
9	C10000	0.00
10	C40000	0.00

Execute Cancel Reverse Table Save Open

Query Category:

**Save Query**

Query Name  
Top\_10\_BPs

Query Category  
Dashboards\_Demo Manage Categories

▼ Dashboards\_Demo

- Top\_10\_BPs
- Top\_10\_Items
- ▶ General
- ▶ SAP\_DASHBOARD\_001\_DAB001\_QUERY
- ▶ SAP\_DASHBOARD\_001\_DAB002\_QUERY
- ▶ SAP\_DASHBOARD\_001\_DAB003\_QUERY

Save Cancel Remove

Authorization Group:

**Create/Edit Categories**

Category Name: Dashboards\_Demo

System:  
General  
SAP\_DASHBOARD\_001\_DAB001\_QUERY  
SAP\_DASHBOARD\_001\_DAB002\_QUERY  
SAP\_DASHBOARD\_001\_DAB003\_QUERY  
**Dashboards\_Demo**

Authorization Groups

<input checked="" type="checkbox"/> Group 1	<input checked="" type="checkbox"/> Group 6	<input checked="" type="checkbox"/> Group 11
<input checked="" type="checkbox"/> Group 2	<input checked="" type="checkbox"/> Group 7	<input checked="" type="checkbox"/> Group 12
<input checked="" type="checkbox"/> Group 3	<input checked="" type="checkbox"/> Group 8	<input checked="" type="checkbox"/> Group 13
<input checked="" type="checkbox"/> Group 4	<input checked="" type="checkbox"/> Group 9	<input checked="" type="checkbox"/> Group 14
<input checked="" type="checkbox"/> Group 5	<input checked="" type="checkbox"/> Group 10	<input checked="" type="checkbox"/> Group 15

Update Cancel Clear All

### Authorizations:

**Authorizations**

Find: \_\_\_\_\_

Subject	Authorization
Human Resources	Full Authorization
Reports	Full Authorization
Sales and Purchasing	Full Authorization
Query Generator	Full Authorization
New Queries	Full Authorization
Create/Edit Categories	Full Authorization
Saved Queries - Group No. 1	Full Authorization
Saved Queries - Group No. 2	Full Authorization
Saved Queries - Group No. 3	Full Authorization
Saved Queries - Group No. 4	Full Authorization
Saved Queries - Group No. 5	Full Authorization
Saved Queries - Group No. 6	Full Authorization
Saved Queries - Group No. 7	Full Authorization

Max. Discount - Sales: 100,000 Expand Collapse

Max. Discount - Purchase: 100,000

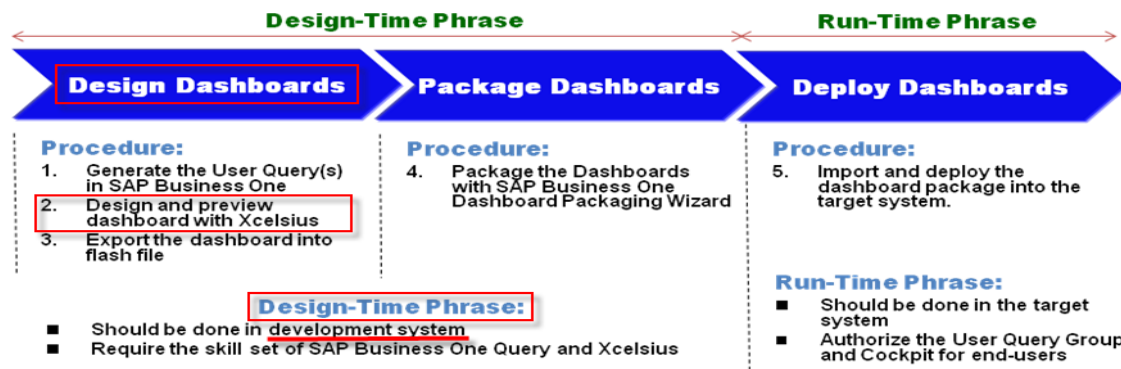
Max. Discount - General: 100,000

☐ Max. Cash Amount for Incoming Payments

Full Authorization Read Only No Authorization

OK Cancel

## Step 2 - Design SAP Crystal Dashboard Design dashboard



You can refer to the "Top\_10\_BPs.xlf" sample file provided as a dashboard sample together with that article.

1. Load the "SAP Crystal Dashboard Design" (tip: make sure that excel is not running at the background).
2. Prepare the data area according for your needs. For example, the data of BP Code and Balance are just sample data for design-time reference; they will be dynamically loaded as query result in run-time. The data of BP Type fields will be used for selecting the business partner type:

	A	B	C	D	E
1	<b>Title</b>	Top 10 Business Partners			
2	<b>BP Code</b>	<b>Balance</b>		<b>BP Type</b>	
3	C010	1000		Customer	C
4	C009	900		Vendor	S
5	C008	800			
6	C007	700			
7	C006	600			
8	C005	500			
9	C004	400			
10	C003	300			
11	C002	200			
12	C001	100			
13					



### Note

You can refer to SAP Crystal Dashboard Design Help and training material to learn more about SAP Crystal Dashboard Design.

3. Add a chart to your SAP Crystal Dashboard Design canvas area, for example: Column Chart. Fill the chart's properties as described below:

- a. General → Titles → Chart: Select the Title value (In this example, it should be Top\_10\_BPs\_Data!\$B\$1)

	A	B
1	<b>Title</b>	<b>Top 10 Business Partners</b>

- b. General → Titles → Category (X) Axis: Select the BP Code cell (In this example it should be: Top\_10\_BPs\_Data!\$A\$2)

	A	B
1	<b>Title</b>	<b>Top 10 Business Partners</b>
2	<b>BP Code</b>	<b>Balance</b>

- c. General → Titles → Value (Y) Axis: Select the Sales the Balance cell (In this example it should be: Top\_10\_BPs\_Data!\$B\$2)

	A	B
1	<b>Title</b>	<b>Top 10 Business Partners</b>
2	<b>BP Code</b>	<b>Balance</b>

As a result, the Titles of Chart should be:

Column Chart 1

General Drill Down Behavior Appearance Alerts

**Titles**

Chart:  
Top\_10\_BPs\_Data!\$B\$1

Subtitle:

Category (X) Axis:  
Top\_10\_BPs\_Data!\$A\$2

Value (Y) Axis:  
Top\_10\_BPs\_Data!\$B\$2

Secondary Value (Y) Axis:

## d. General → Data → By Series

Name: Select the Sales the Balance cell (In this example it should be:

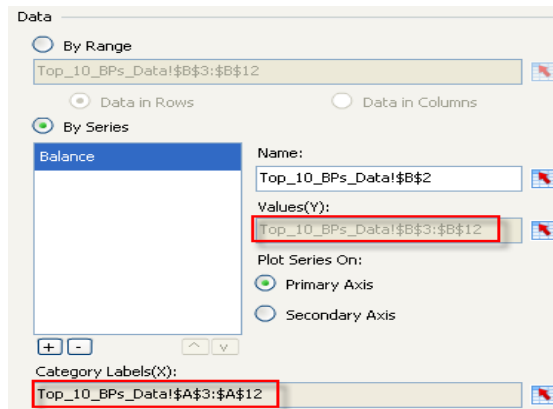
Top\_10\_BPs\_Data!\$B\$2)

Values(Y): Select the Balance values list (In this example it should be:

Top\_10\_BPs\_Data!\$B\$3:\$B\$12)

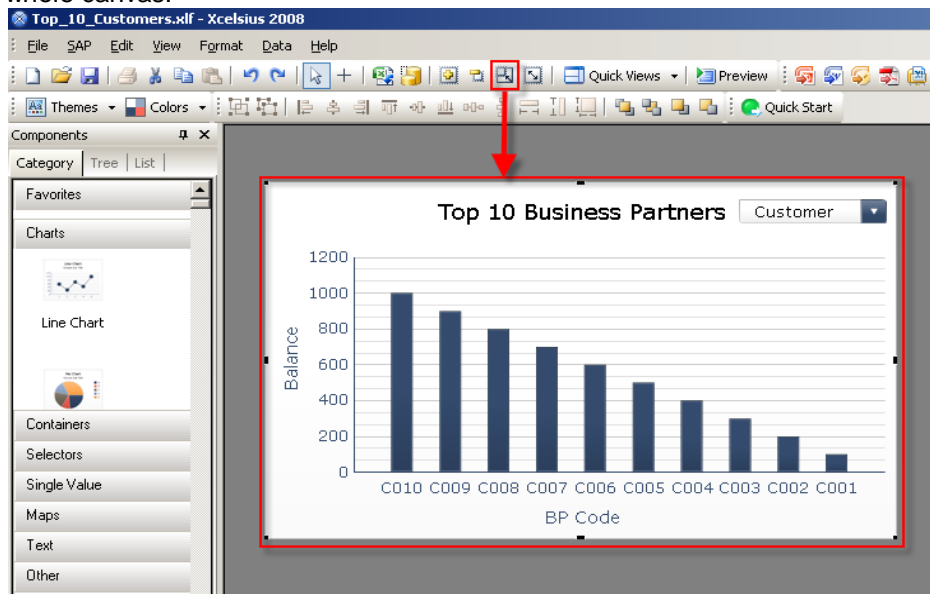
Category Labels(X): Select the BP Code values list (In this example it should be:

Top\_10\_BPs\_Data!\$A\$3:\$A\$12)



## Recommendation

You are recommended to set Fit Canvas to Components. Hence the chart is filled over the whole canvas.



4. Prepare another sheet about the query information, which will be used to define the connection parameters for XML Data in SAP Crystal Dashboard Design.

	A	B	C	D	E	F	G
1	Send Name	Query Category	Query Name	Param_0	Param_1	Param_2	More...
2	Top_10_BPs	Dashboards_Demo	Top_10_BPs	C			
3							
4							
5							
6							
7							
8							
9							
10							
11							
12							
13							





<b>Send_Name</b>	The variable name sent to B1ic with Xml Data query
<b>Query_Category</b>	Query Category: Dashboards_Demo
<b>Query_Name</b>	Query: Top_10_BPs
<b>Param_x</b>	<p>X stand for the sequence of parameter in the query. e.g:  Param_0: stand for [%0], We have define  CardType as parameter '[%0]', so we set the default value as <b>C</b> – Customer.  Param_1: stand for [%1]  .....  You can add as many parameter as necessary, just keep the right sequence.</p>

**Note**

The names of Send\_Name, Query\_Category etc are just for information, it can be other words. But it is critical to keep the sequence.

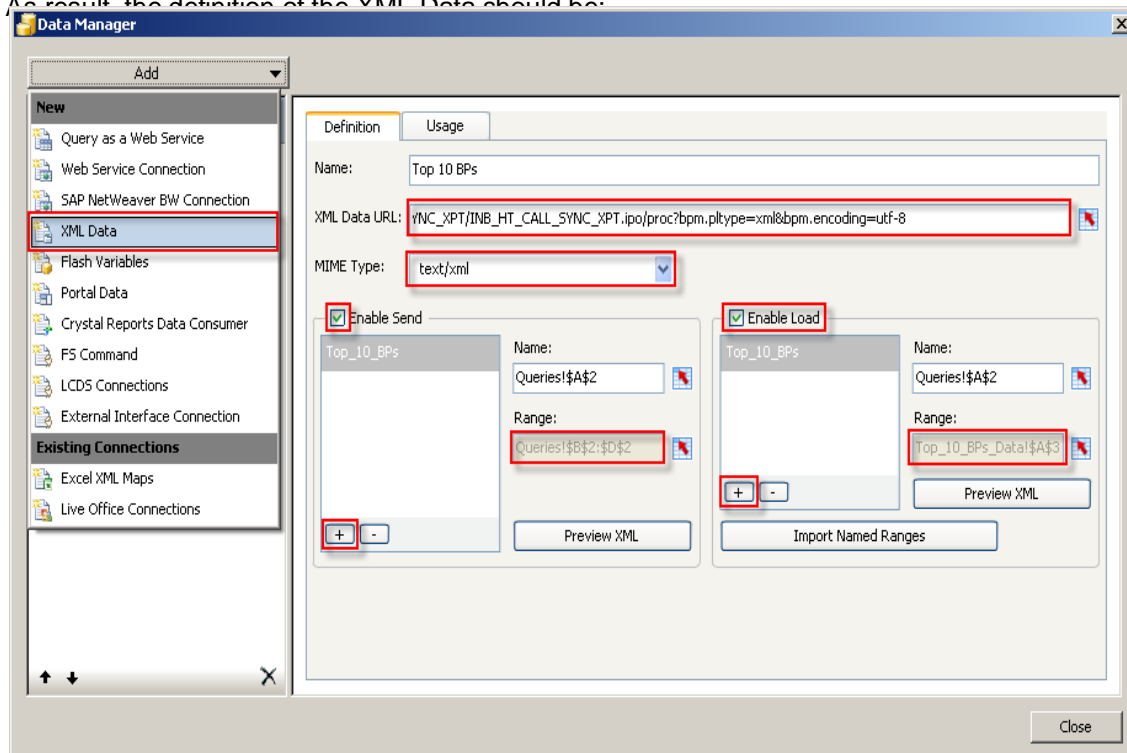
5. Add an XML Data connection from menu Data → Connections:  
Fill the Definition properties:

<b>Name</b>	The connection name. e.g. "Top 10 BPs"
<b>XML Data URL</b>	<p>http://&lt;Server&gt;:8080/B1iXcellerator/exec/ipo/vP.001sap0004.in_HCSX/com.sap.b1i.vplatform.runtime/INB_HT_CALL_SYNC_XPT/INB_HT_CALL_SYNC_XPT.ipo/proc?bpm.pltype=xml&amp;bpm.encoding=utf-8</p>  <p><b>Note</b></p> <p>You should replace the &lt;Server&gt; with your server name.</p> <p>During the design-time phrase, in order to preview the dashboard in SAP Crystal Dashboard Design we'll set the full URL. But in the run-time phrase it only requires the relevant path (proc?bpm.pltype=xml&amp;bpm.encoding=utf-8), since SAP Business One will compose the full path.</p>
<b>MIME Type</b>	Choose "text/xml"
<b>Enable Send</b>	<ul style="list-style-type: none"> <li>- Select Enable Send</li> <li>- Add a Send Variable</li> <li>- Select the Sent Variable Name as the value of Send_Name. (In this example, it should be: Queries!\$A\$2)</li> <li>- Select the Range as the list from Query_Category to Param_X. (In this example, we have only one parameter in the query, thus it should be Query_Category to Param_0: Queries!\$B\$2:\$D\$2)</li> </ul> <p>Click the Preview XML, it should show:</p>

	<pre> - &lt;data&gt; - &lt;variable name="Top_10_BPs"&gt; - &lt;row&gt;   &lt;column&gt;Dashboards_Demo&lt;/column&gt;   &lt;column&gt;Top_10_BPs&lt;/column&gt;   &lt;column&gt;C&lt;/column&gt; &lt;/row&gt; &lt;/variable&gt; &lt;/data&gt; </pre>
<b>Enable Load</b>	<ul style="list-style-type: none"> <li>- Select Enable Load</li> <li>- Add a Load Variable</li> <li>- Select the Load Variable Name as the value of Send_Name. (In this example, it should be: Queries!\$A\$2)</li> <li>- Select the Range as the lists of BP Code and Balance in the Data sheet. The data will be dynamically loaded in run-time. (In this example, it should be: Top_10_BPs_Data!\$A\$3:\$B\$12)</li> </ul>  <p>Click the Preview XML, it should show:</p> <pre> - &lt;data&gt; - &lt;variable name="Top_10_BPs"&gt; - &lt;row&gt;   &lt;column&gt;C010&lt;/column&gt;   &lt;column&gt;1000&lt;/column&gt; &lt;/row&gt; - &lt;row&gt;   &lt;column&gt;C009&lt;/column&gt;   &lt;column&gt;900&lt;/column&gt; &lt;/row&gt; + &lt;row&gt; </pre>



As result, the definition of the XML Data should be:

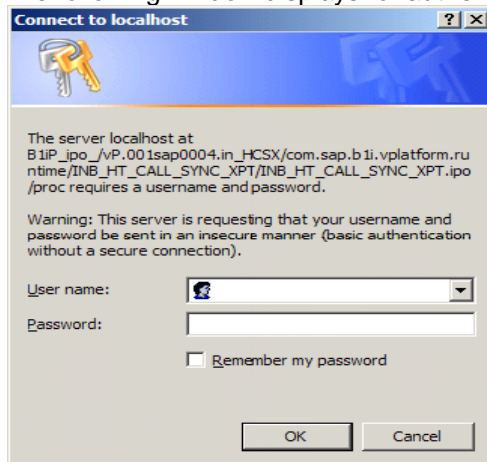


In the Usage tab, by default, the refresh option is selected as Refresh Before Component are Loaded.

6. Preview the dashboard in SAP Crystal Dashboard Design by clicking the Preview Button in the tool bar.



The following window displays for authentication.



**User Name:**

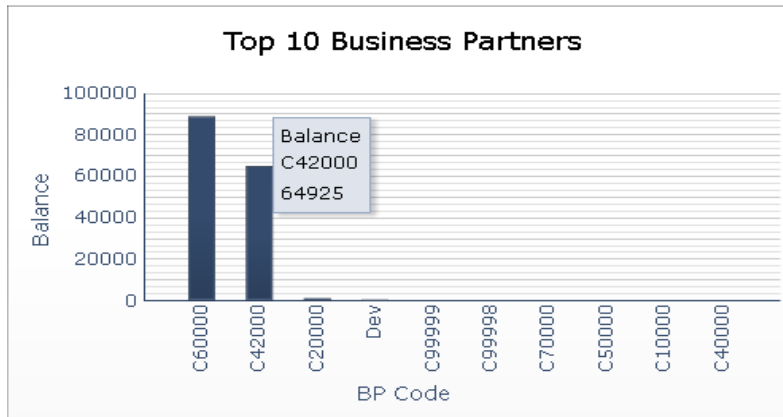
language/user\_name/company\_name  
language\user\_name\company\_name  
e.g. en-US/manager/SBODemoUS  
(language enumeration:  
cs-CZ, da-DK, de-DE, el-GR, en-CY, en-GB, en-US, en-SG, es-AR, es-CO, es-ES, es-PA, fi-FI, fr-FR, he-IL, hu-HU, it-IT, ja-JP, ko-KR, nl-NL, no-NO, pl-PL, pt-BR, pt-PT, ru-RU, sk-SK, sr-YU, sv-SE, xx-XX, zh-CN, zh-TW)

**Password:**

The B1 user password (the one for manager for example)

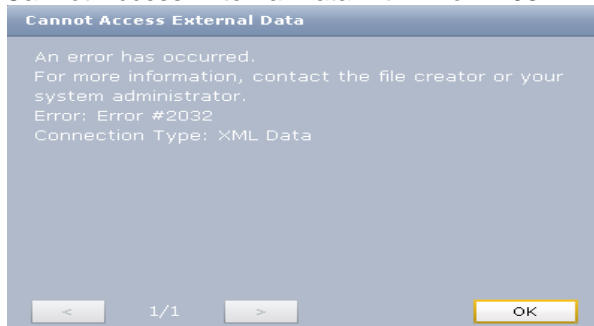
Hebrew characters are not allowed in password.

After the authentication, now you should be able to see the Top 10 Business Partners dashboard from your company live data:



### Trouble Shootings:

#### a) Cannot Access External Data with Error #2032



#### Check List:

- Make sure SAP Business One Integration Service is running in windows service.
- Make sure SAP Crystal Dashboard Design 2008 Fix Pack 3.1 or higher and Adobe Flash Player 9.0 or higher installed
- Make sure MIME Type is selected as text/xml in XML Data Definition

#### b) No data displays. Mostly run-time error during query, no data retrieved.



#### Check List:

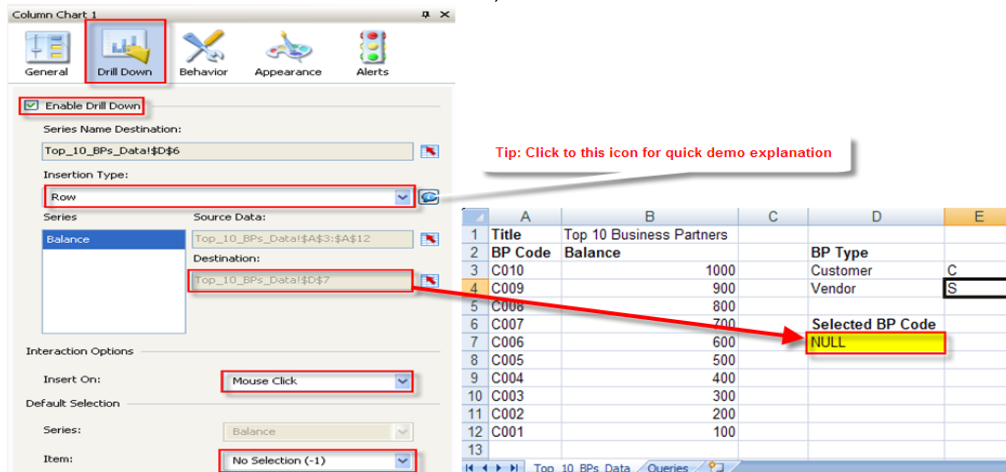
- Make sure the query can be executed successfully in SAP Business One
- Make sure the right query category ,query name and parameters given.



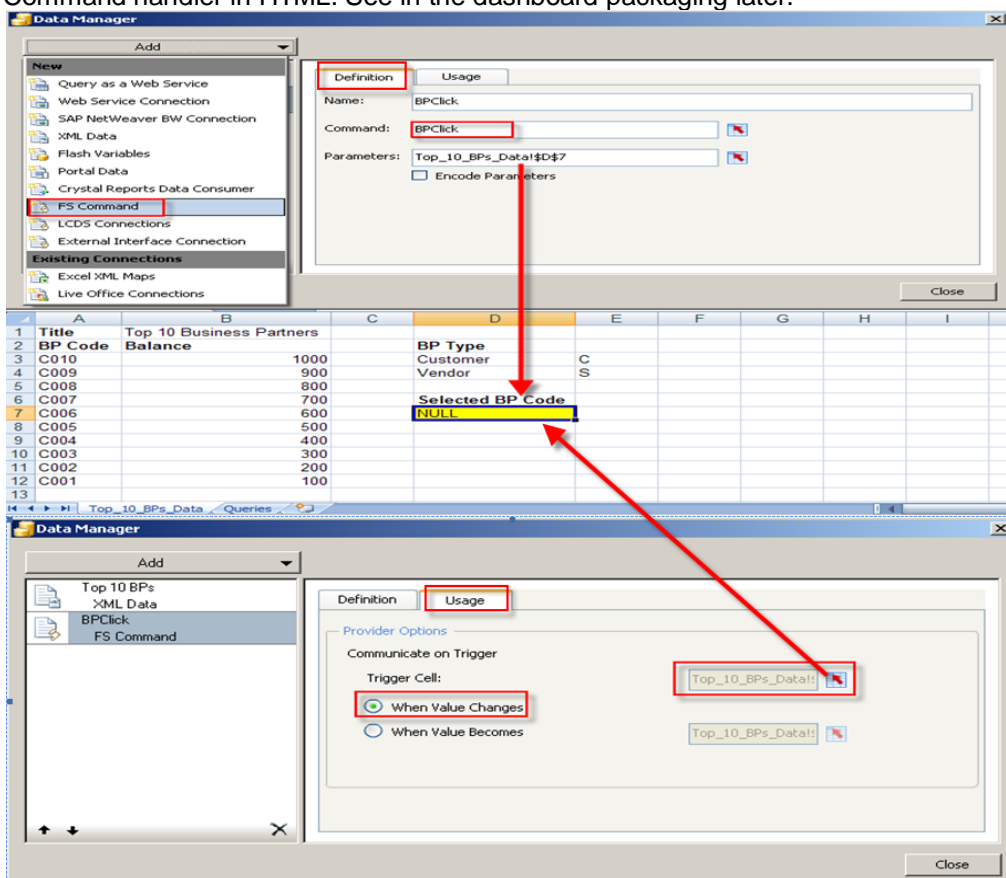
#### Note

You can use some Http debug tools such as Fiddler etc, checking out the Http request and response.

7. **(Optional)** Add FS command to enable B1 link function for Business Partner Master Data. This selected BP code will be used in FS Command to trigger to open the selected Business Partner in SAP Business One.
- a) Enable Drill Down for the column chart.  
Drill Down → Enable Drill Down: When the end user is selecting a Business Partner by mouse clicking in the column chart; the selected BP code will be filled to the target cell marked in yellow. The source data is BP Code and Balance, the destination for selected BP code is the yellow cell.



- b) Add a FS Command with Data Manager. The FS command will be triggered to open the selected Business Partner Master Data in SAP Business when selecting BP in column chart. You should choose FS command in Dashboard Packaging Wizard. It will generate the script for the FS Command handler in HTML. See in the dashboard packaging later.



8. **(Optional)** Add a Comobox selector for selecting BP type interactively. Therefore, Top 10 Business Partners is showed dynamically by Vendor or Customer.

The screenshot shows the SAP Business One dashboard development environment. On the left, the 'Components' pane has 'Selectors' expanded, with 'Combo Box' selected. In the center, a bar chart titled 'Top 10 Business Partners' displays balance data for various BP codes. Below the chart is a data table with columns for BP Code and Balance. On the right, the 'Combo Box 1' configuration panel is open, showing the 'General' tab. The 'Labels' section has 'Top 10 BPs Data!\$C\$3:\$C\$4' selected. The 'Data Insertion' section shows 'BP Type' as the selected data source, with 'Value' as the insertion type. The 'Source Data' is set to 'Top\_10\_BPs\_Data!\$E\$3:\$E\$4' and the 'Destination' is 'Queries!\$D\$2'. The 'Behavior' tab is also visible, showing options for 'Data Change and Interaction' and 'Interaction Only'.

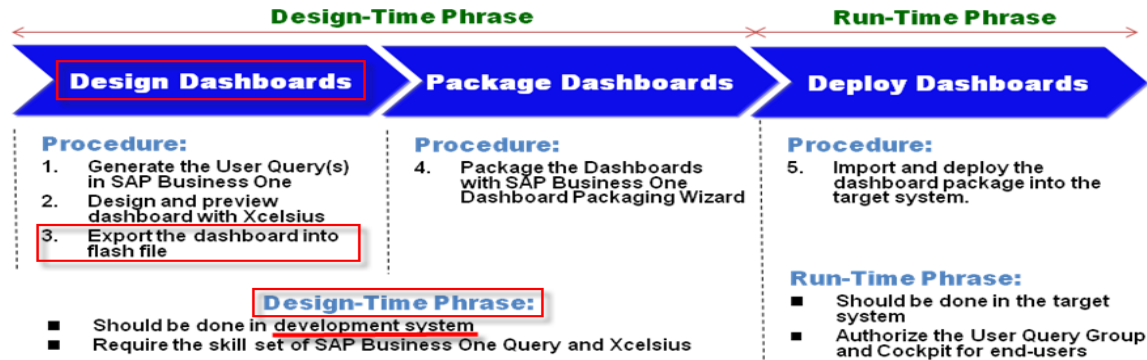
### Destination: Param\_0 – BP Type

	A	B	C	D	E	F	G
1	Send Name	Query Category	Query Name	Param 0	Param 1	Param 2	More...
2	Top_10_BPs	Dashboards Demo	Top_10_BPs	C			
3							

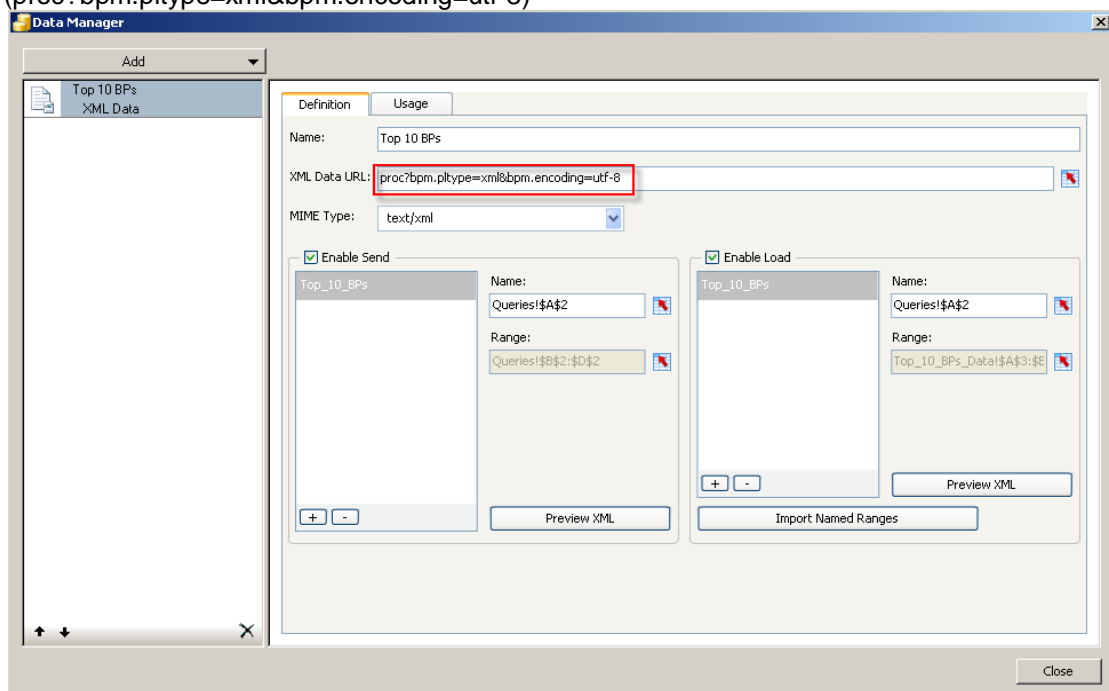
### Behavior:

The screenshot shows the 'Behavior' tab of the 'Combo Box 1' configuration panel. The 'Common' section is active, showing 'Selected Item' settings. The 'Type' is set to 'Label' and the 'Item' is 'Label 1'. The 'Insert Selected Item' field is empty. The 'Ignore Blank Cells' section has 'Ignore cells at End-of-Range only.' checked, and the 'In Values' checkbox is also checked. The 'Dynamic Visibility' section is empty.

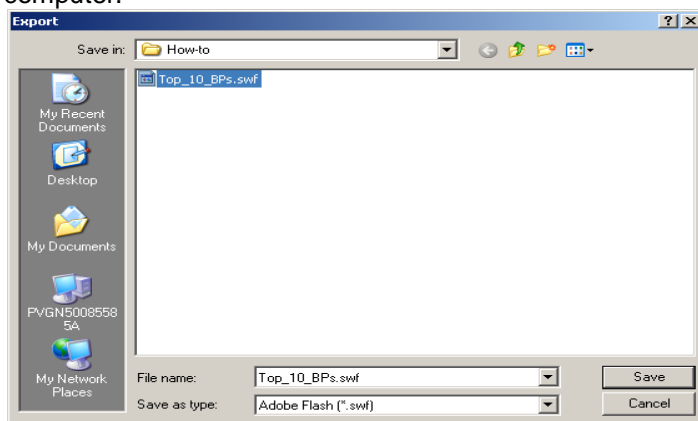
### Step 3 – Export the SAP Crystal Dashboard Design dashboard into a flash



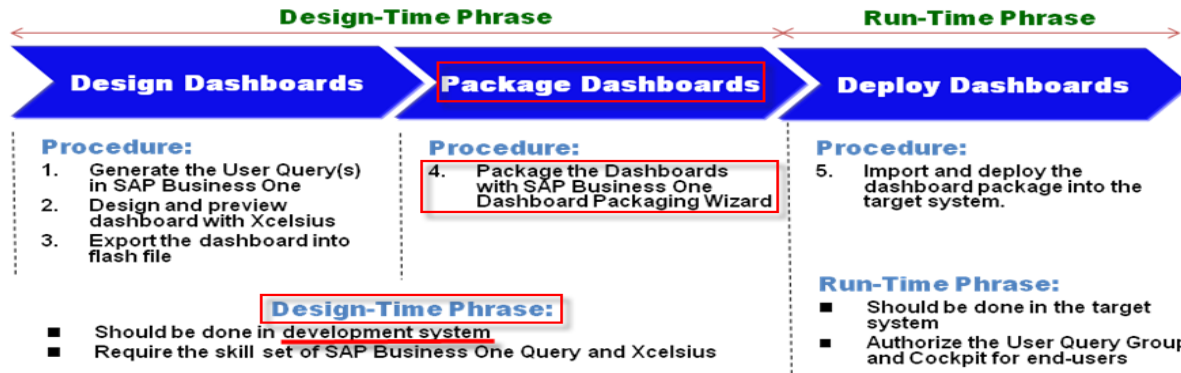
1. Before export, we need to switch XML Data URL as the relevant path (proc?bpm.pltype=xml&bpm.encoding=utf-8)



2. In the upper menu click on File → Save
3. In the upper menu click on File → Export → Flash (SWF). Save it as Top\_10\_BPs.swf in your computer.



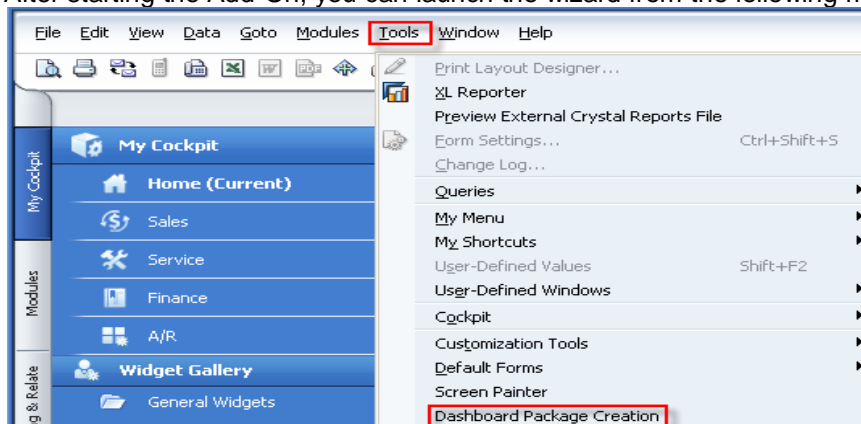
## Step 4 – Package the Dashboard(s) with SAP Business One Dashboard Packaging Wizard (B1DW)



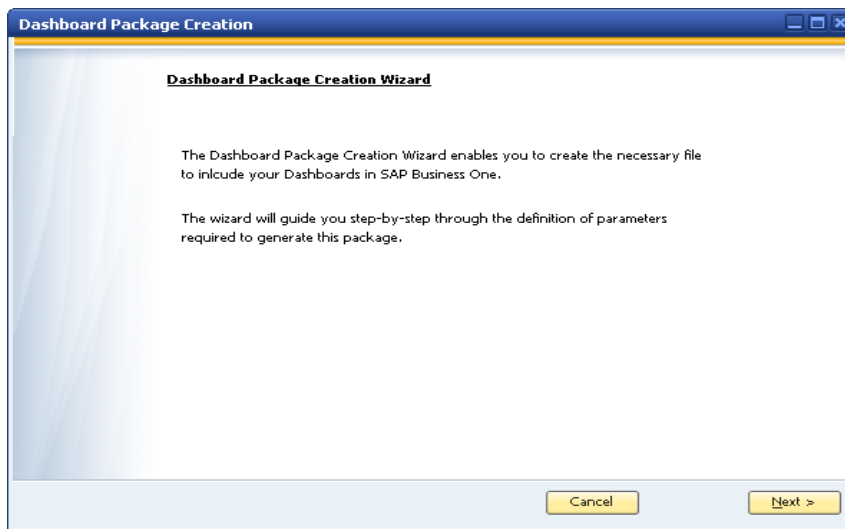
1. You can download this Add-On tool and documentation from <http://www.sdn.sap.com/irj/sdn/businessone> -> SAP Business One Tools -> IMPLEMENTATION TOOLS

2. Register and install the Add-On.

3. After starting the Add-On, you can launch the wizard from the following menu.



4. Follow the Dashboard Package Creation Wizard



**Dashboard Package Creation Wizard**

Fill the general information for creating the package. The partner Namespace will be included in the package unique code and will be part of the package name after creation.

Package general information

Partner Namespace: XXX

Unique Code: XXX Top\_10\_BPs

Name: Top 10 Business Partners

Description: Demo Dashboard Package - Top 10 BPs

Author: Yatsea Li

Version: 1.0

Cancel < Back Next >



### Note

You should replace XXX with you Partner Namespace.

**Dashboard Package Creation Wizard**

Include the name of the Dashboards that will be inside the package.

Dashboard information

Unique Code	Name	Description	SWF File Path	Width	Height
DA50001	Top_10_BPs	Top 10 BPs	Click to search...	100%	100%

Cancel < Back Next >

Select the flash file exported in Step 4.

**Open**

Look in: How-to

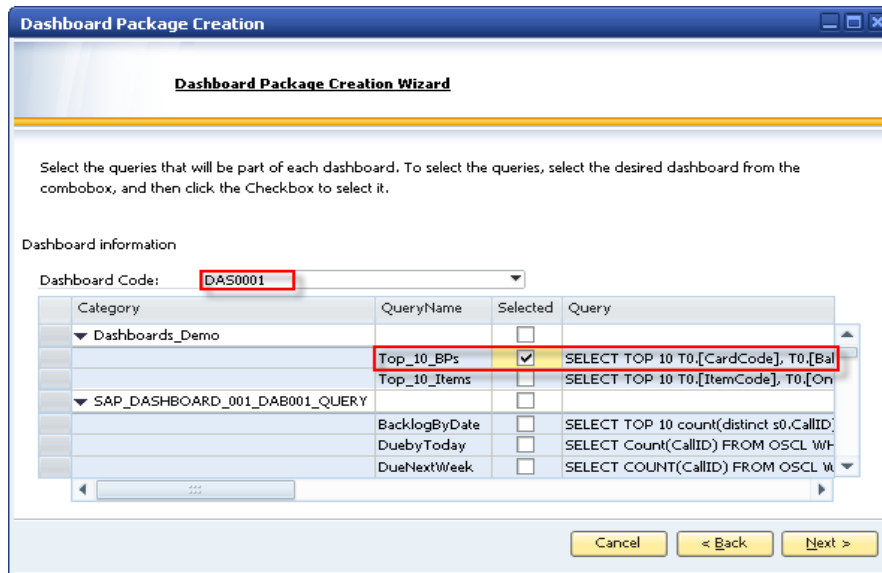
Top\_10\_BPs.swf

File name: Top\_10\_BPs.swf

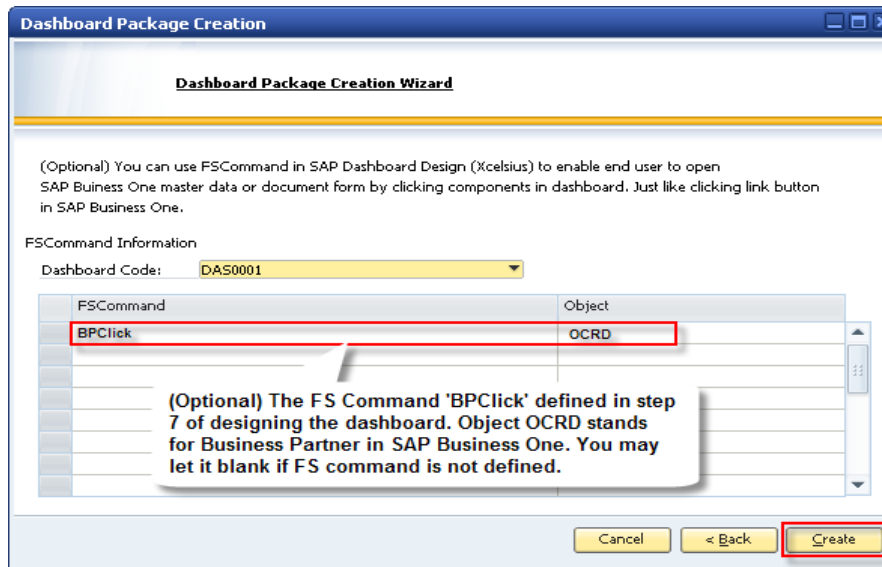
Files of type: swf files (\*.swf)

Open Cancel

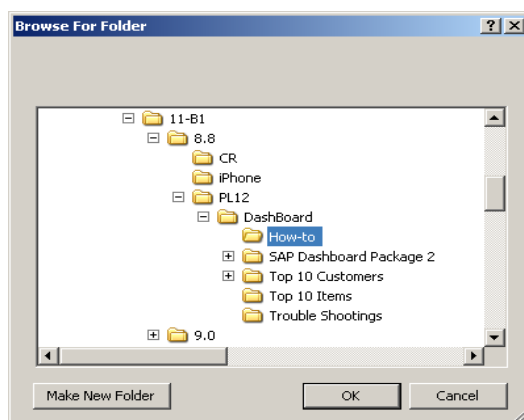


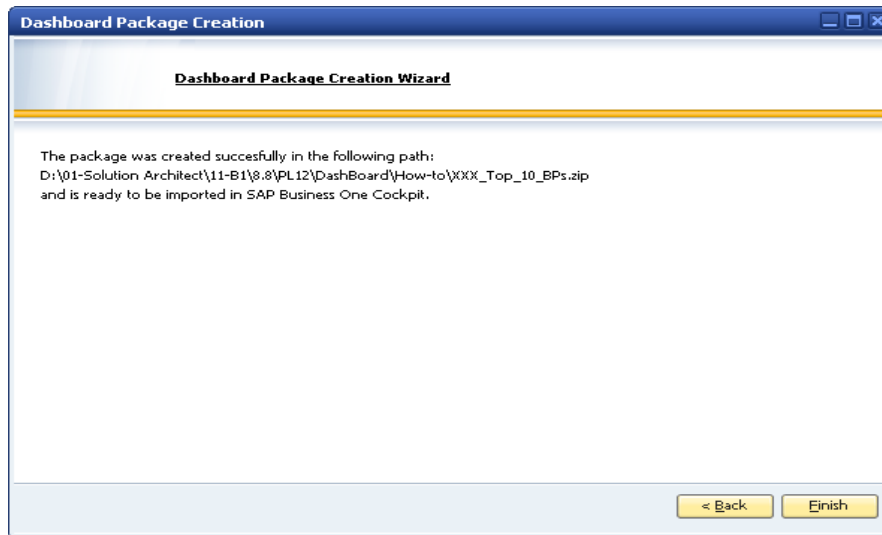


Select query for the dashboard.

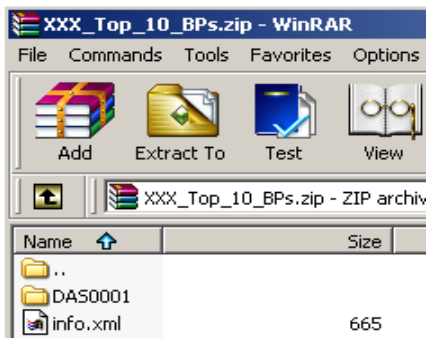


Select the folder to save the dashboard package.

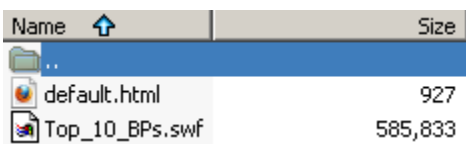




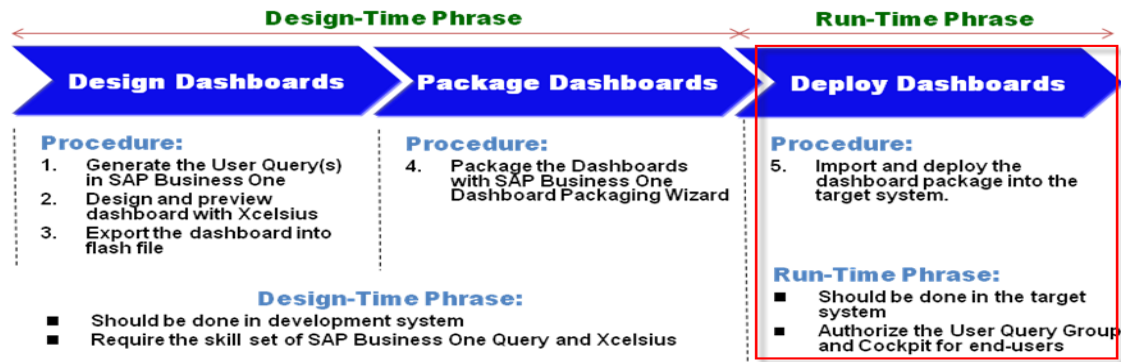
The structure of Dashboard Package:



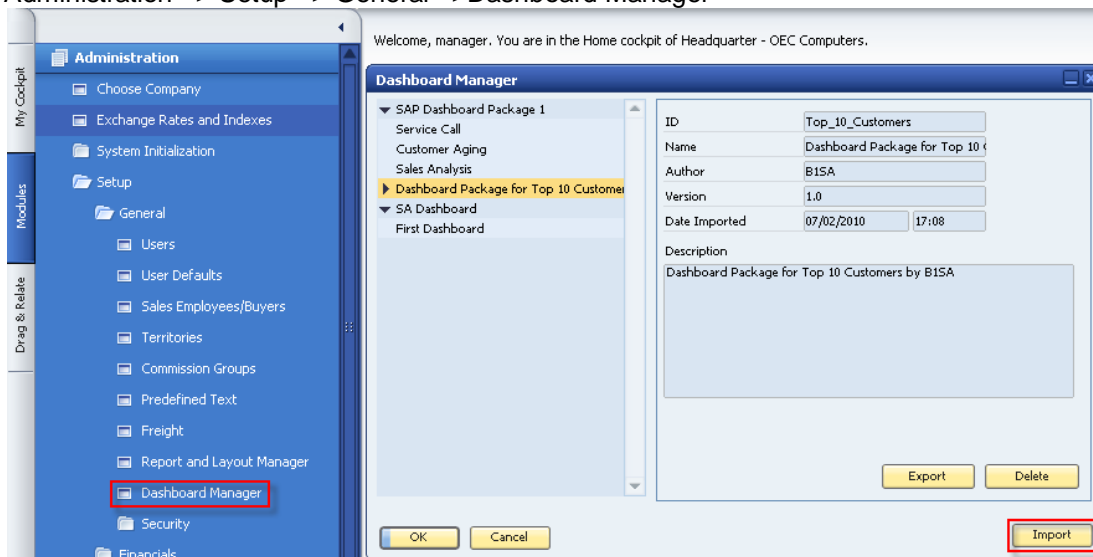
Inside DAS0001:



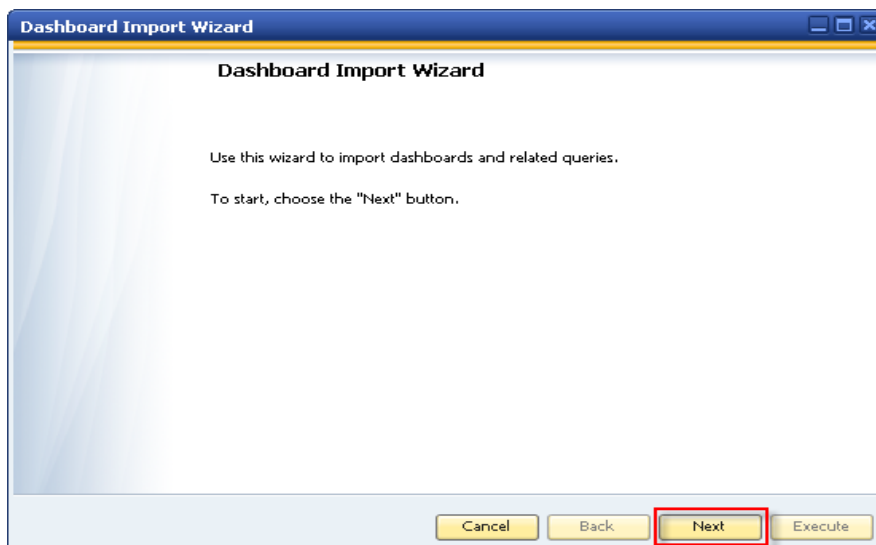
## Step 5 –Deploy the Dashboard Package in the target SAP Business One system

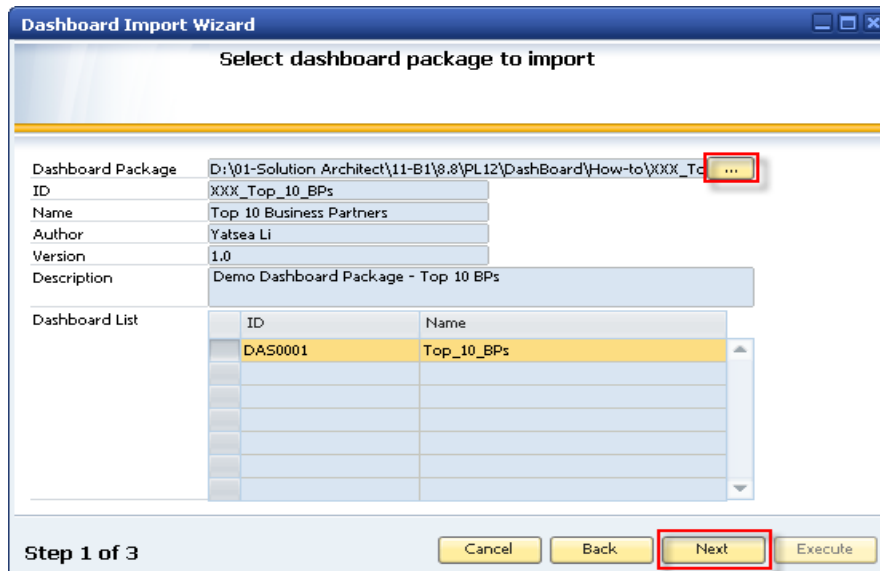


1. You can import the dashboard package in SAP Business One through menu: Administration => Setup => General =>Dashboard Manager

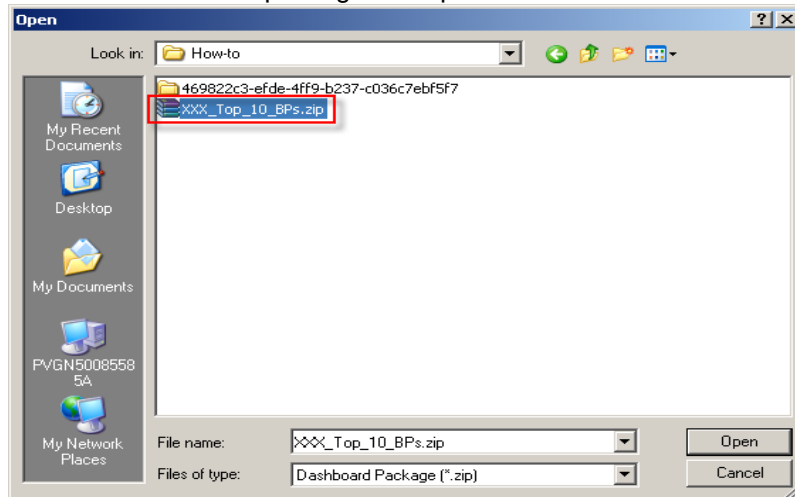


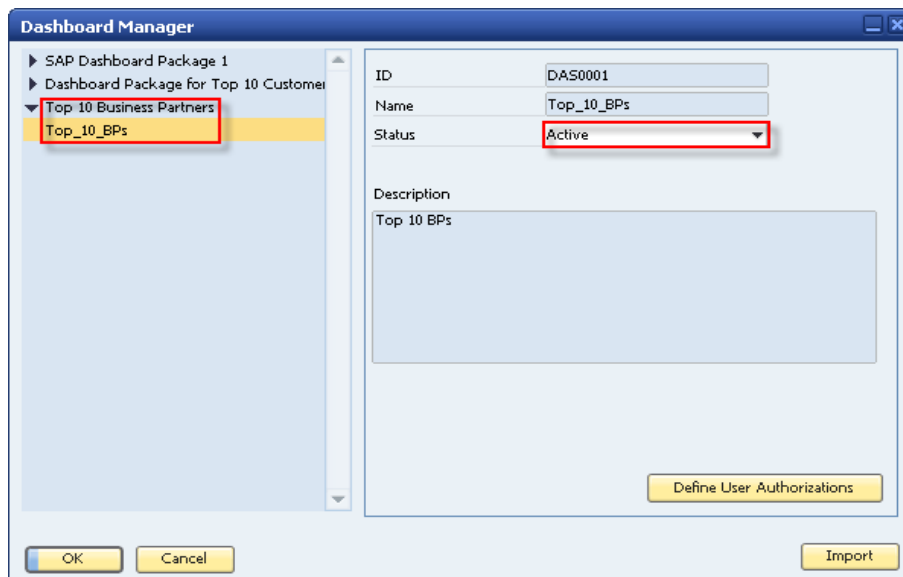
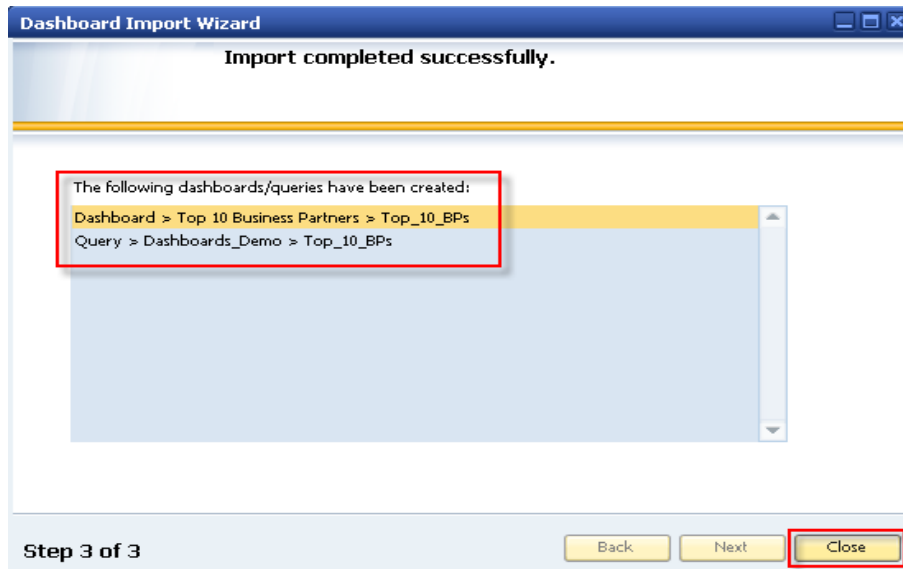
Click the Import button to launch the Dashboard Import Wizard



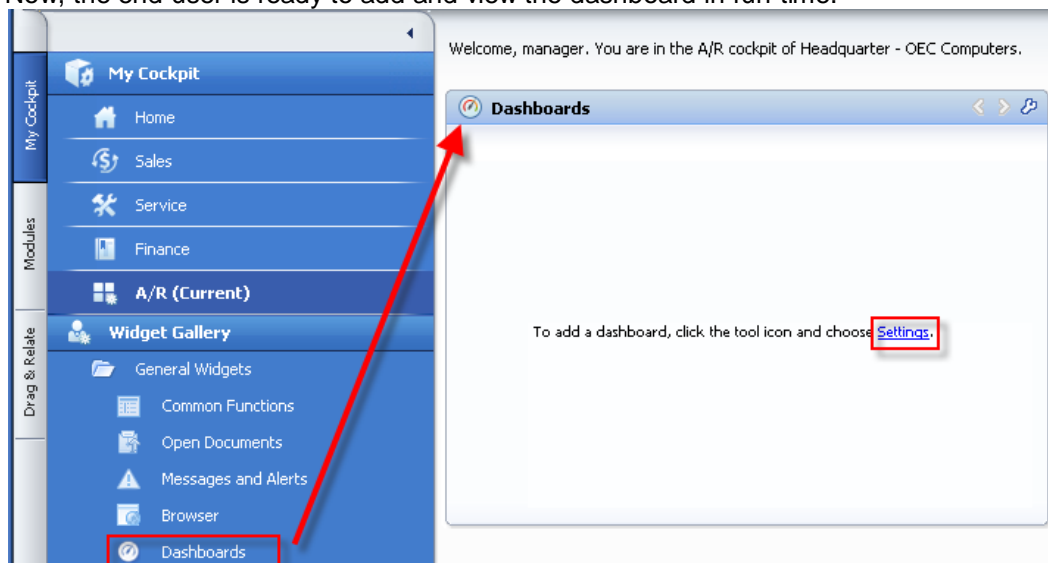


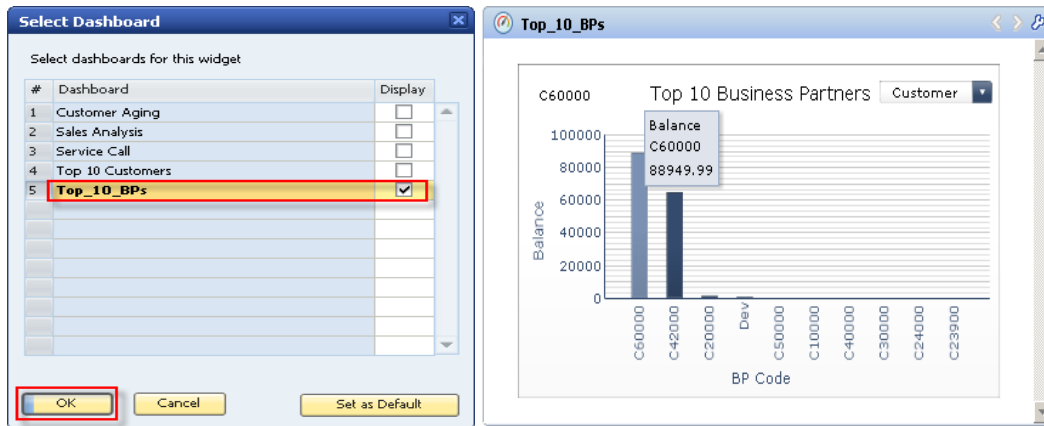
Select the dashboard package in Step 4.





Now, the end-user is ready to add and view the dashboard in run-time.





Clicking the column of one BP will open the selected Business Partner Master Data.

The 'Business Partner Master Data' form displays the details for BP C60000, a Customer. The form includes fields for Code, Name, Foreign Name, Group, Currency, and Federal Tax ID. It also shows the Account Balance (104,169.10), Deliveries (0.00), Orders (1,763.46), and Opportunities. The form is divided into tabs: General, Contact Persons, Addresses, Payment Terms, Payment System, Accounting, Properties, and Remarks. The General tab is active, showing contact information, shipping type, and other details.

**General Tab Data:**

- Code: C60000
- Name: SG Electronics
- Foreign Name:
- Group: Production
- Currency: Canadian Dollar
- Federal Tax ID:
- Account Balance: 104,169.10
- Deliveries: 0.00
- Orders: 1,763.46
- Opportunities:
- Tel 1: (393) 980-7791
- Tel 2:
- Mobile Phone:
- Fax: (393) 980-7723
- E-Mail: info@sg.com.ca
- Web Site: www.sg.com.ca
- Shipping Type: UPS Ground
- Shipping Method: Sales Employee
- Shipping Employee: Jim Boswick
- Project:
- Industry:
- Business Partner Type: Company
- Territory:
- Alias Name:
- Active: ☒ Active, ☐ Inactive, ☐ Advanced

## Related Content

For more information about this topic:

- 1) SAP Business One Dashboard Packaging Tool – <http://www.sdn.sap.com/irj/sdn/businessone> -> SAP Business One Tools -> IMPLEMENTATION TOOLS
- 2) SAP Crystal Dashboard Design Landing Page - [https://service.sap.com/~form/sapnet?\\_SCENARIO=01100035870000000183&\\_SHORTKEY=01100035870000711038&\\_OBJECT=011000358700000566202008E&\\_ADDINC=011000358700001192682007E&](https://service.sap.com/~form/sapnet?_SCENARIO=01100035870000000183&_SHORTKEY=01100035870000711038&_OBJECT=011000358700000566202008E&_ADDINC=011000358700001192682007E&)
- 3) [Download](#) the Sample



## Copyright

© Copyright 2010 SAP AG. All rights reserved.

No part of this publication may be reproduced or transmitted in any form or for any purpose without the express permission of SAP AG. The information contained herein may be changed without prior notice.

Some software products marketed by SAP AG and its distributors contain proprietary software components of other software vendors.

Microsoft, Windows, Excel, Outlook, and PowerPoint are registered trademarks of Microsoft Corporation.

IBM, DB2, DB2 Universal Database, System i, System i5, System p, System p5, System x, System z, System z10, System z9, z10, z9, iSeries, pSeries, xSeries, zSeries, eServer, z/VM, z/OS, i5/OS, S/390, OS/390, OS/400, AS/400, S/390 Parallel Enterprise Server, PowerVM, Power Architecture, POWER6+, POWER6, POWER5+, POWER5, POWER, OpenPower, PowerPC, BatchPipes, BladeCenter, System Storage, GPFS, HACMP, RETAIN, DB2 Connect, RACF, Redbooks, OS/2, Parallel Sysplex, MVS/ESA, AIX, Intelligent Miner, WebSphere, Netfinity, Tivoli and Informix are trademarks or registered trademarks of IBM Corporation.

Linux is the registered trademark of Linus Torvalds in the U.S. and other countries.

Adobe, the Adobe logo, Acrobat, PostScript, and Reader are either trademarks or registered trademarks of Adobe Systems Incorporated in the United States and/or other countries.

Oracle is a registered trademark of Oracle Corporation.

UNIX, X/Open, OSF/1, and Motif are registered trademarks of the Open Group.

Citrix, ICA, Program Neighborhood, MetaFrame, WinFrame, VideoFrame, and MultiWin are trademarks or registered trademarks of Citrix Systems, Inc.

HTML, XML, XHTML and W3C are trademarks or registered trademarks of W3C®, World Wide Web Consortium, Massachusetts Institute of Technology.

Java is a registered trademark of Sun Microsystems, Inc.

JavaScript is a registered trademark of Sun Microsystems, Inc., used under license for technology invented and implemented by Netscape.

SAP, R/3, SAP NetWeaver, Duet, PartnerEdge, ByDesign, SAP Business ByDesign, and other SAP products and services mentioned herein as well as their respective logos are trademarks or registered trademarks of SAP AG in Germany and other countries.

Business Objects and the Business Objects logo, BusinessObjects, Crystal Reports, Crystal Decisions, Web Intelligence, SAP Crystal Dashboard Design, and other Business Objects products and services mentioned herein as well as their respective logos are trademarks or registered trademarks of Business Objects S.A. in the United States and in other countries. Business Objects is an SAP company.

All other product and service names mentioned are the trademarks of their respective companies. Data contained in this document serves informational purposes only. National product specifications may vary.

These materials are subject to change without notice. These materials are provided by SAP AG and its affiliated companies ("SAP Group") for informational purposes only, without representation or warranty of any kind, and SAP Group shall not be liable for errors or omissions with respect to the materials. The only warranties for SAP Group products and services are those that are set forth in the express warranty statements accompanying such products and services, if any. Nothing herein should be construed as constituting an additional warranty.